



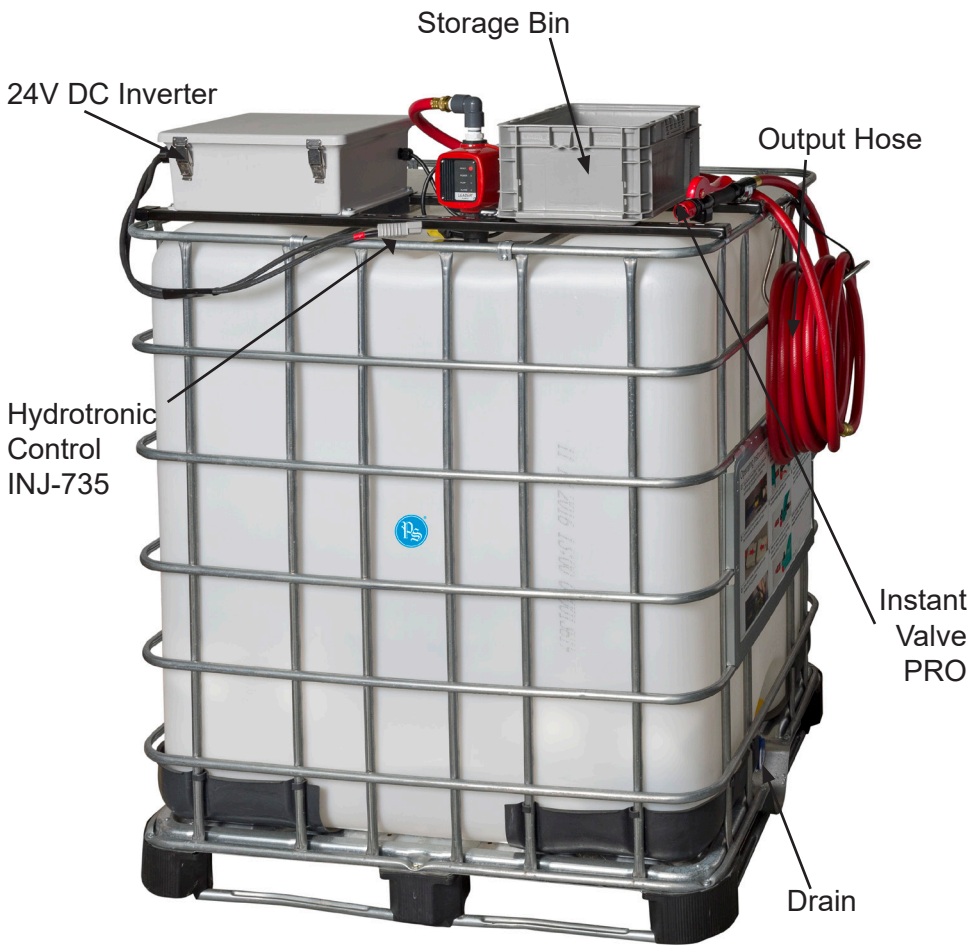
Philadelphia Scientific®  
industrial battery innovation

## Water Buffalo



## Water Supply for the Water Injector System™

Model: INJ-719



### **HEALTH AND SAFETY PRECAUTIONS**

**Use only with a 24V Battery. Minimum capacity of 750 Ah.  
When traveling with the tank, travel with the power unit first.**

**Do not lift tank higher than 6 inches (15.24 cm) while in transit.**

**Tip over hazard; use low speed and wide turns.**

**MAX Weight of tank full: 3,000 lbs. (1,361 kg.)**

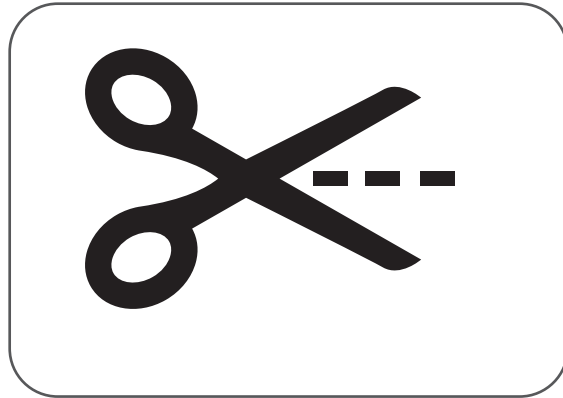
**Batteries contain sulphuric acid, always wear approved protective clothing (gloves, goggles and apron).**

# Set Up



Remove banding and packing material.

Remove the Water Buffalo from the pallet that the unit ships on.



Cut the yellow cable ties that secure the red output hose to the top of the tank.

Use care to not cut the hose!



Flip the hose hanger into place and place red output hose onto the hose hanger.

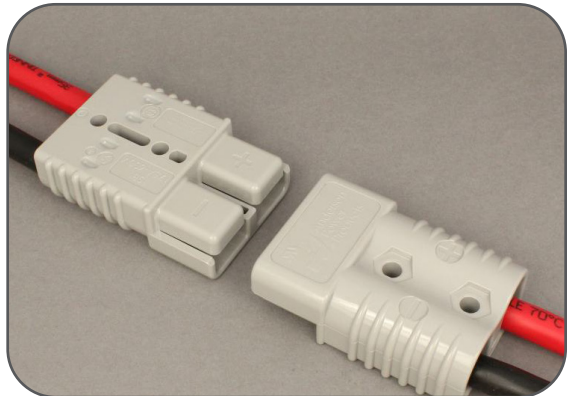
# Operation

Use Quick-Connect fitting on the top of the tank to fill the tank with deionized. Filling will stop automatically (300 gallons/1135.6 liters).



Connect SB175 from Inverter to the battery in the pallet rider truck.

**It is highly recommended to install an Anti Static Ground Strap on the truck used to move and power the Water Buffalo.**



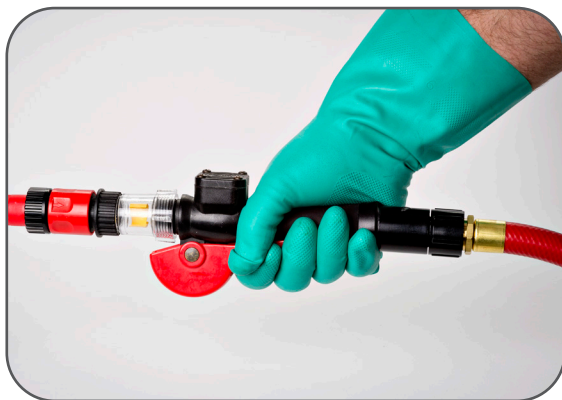
Open lid to inverter, move the switch on the inverter to the On position.

Insert the Instant Valve Pro into the large opening on the tank and run the pump until water flows from the Instant Valve Pro. This will clear the line of air.





Connect the Instant Valve Pro™ to the Input Assembly of the BIS System installed on the battery.



Squeeze the lever completely to fill the battery.

Do Not Partially Squeeze the Lever.



Watch the spinner mounted on the Instant Valve Pro. When it stops spinning, the filling is completed (about 15 seconds, usually). Note: The spinner may not come to a complete stop, especially in larger systems. The battery is filled when the spinner slows enough to clearly see the inner blades/vanes.



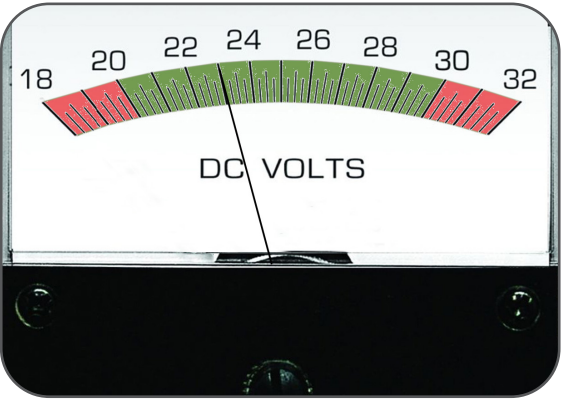
Release the lever.  
Disconnect the Instant  
Valve Pro from the Water  
Injector System.



When filling operations are  
complete, turn the  
inverter off and store the  
red output hose. If the  
tank is going to remain  
unused for an extended  
period of time, drain the  
tank.



NOTE: Inverter will shut off  
when battery voltage  
reaches 20 VDC. If this  
occurs, fully charge the  
battery before the next use.



# Draining the unit



To drain the tank, remove the protective cap.



Rotate the lever to the open position.



Return the level to the off position and replace the protective cap.

## HydroPure™ Deionizer

Part Number: PS-300

The HydroPure Deionizer is the most cost effective way to produce on-site battery water. Deionized water is produced for a fraction of what it costs to buy a gallon of distilled water and there is no transportation cost to bring the water to your location. When compared to the cost of prematurely replacing a cell or a battery the HydroPure Deionizer System is easily cost justified.



**Philadelphia Scientific®**  
industrial battery innovation

Philadelphia Scientific LLC  
207 Progress Drive  
Montgomeryville, PA 18936  
P: 215.616.0390 F: 215.616.0500  
[www.phlsci.com](http://www.phlsci.com)