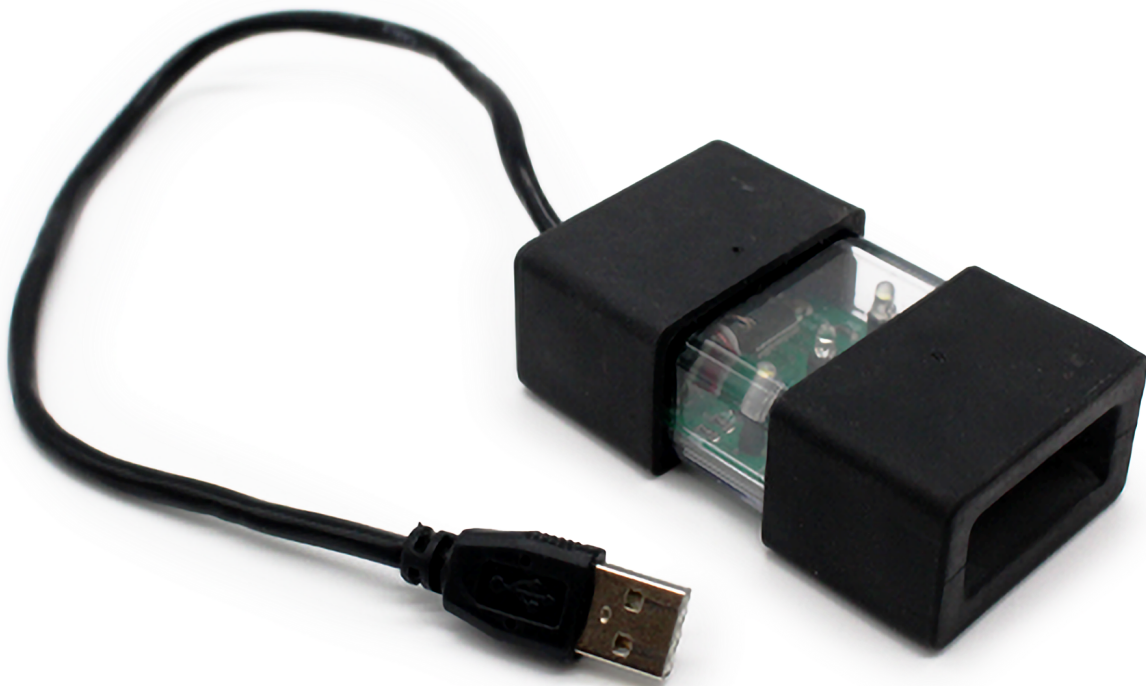


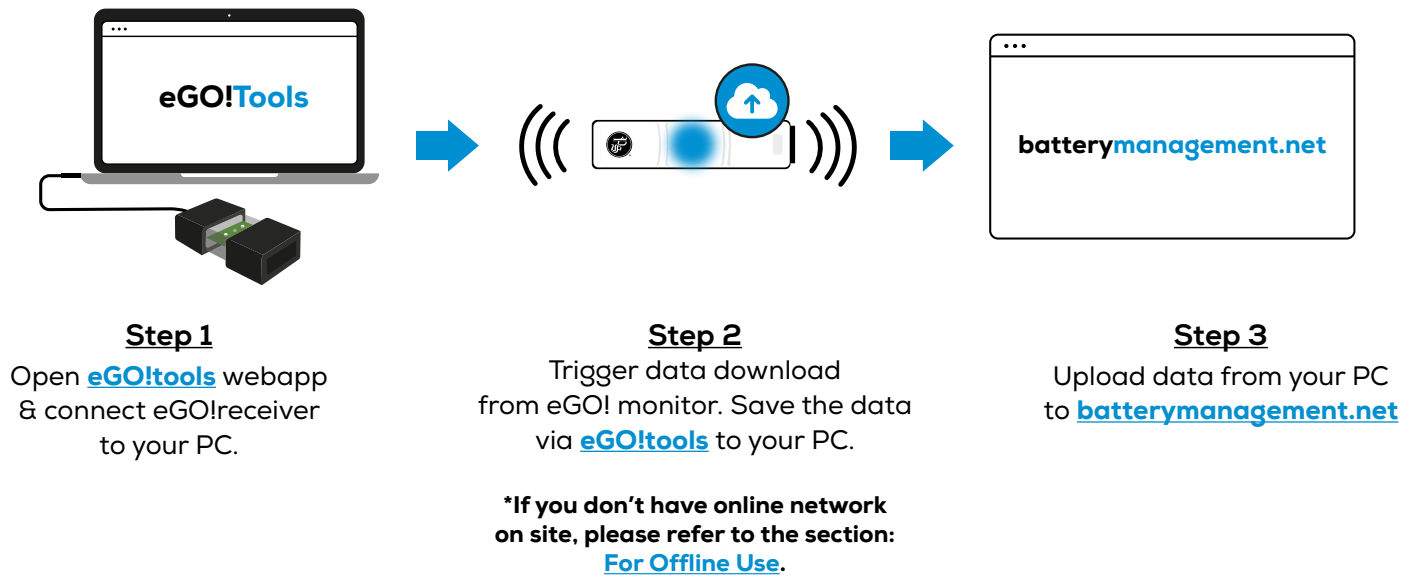
OWNER'S MANUAL

EGO2-RK

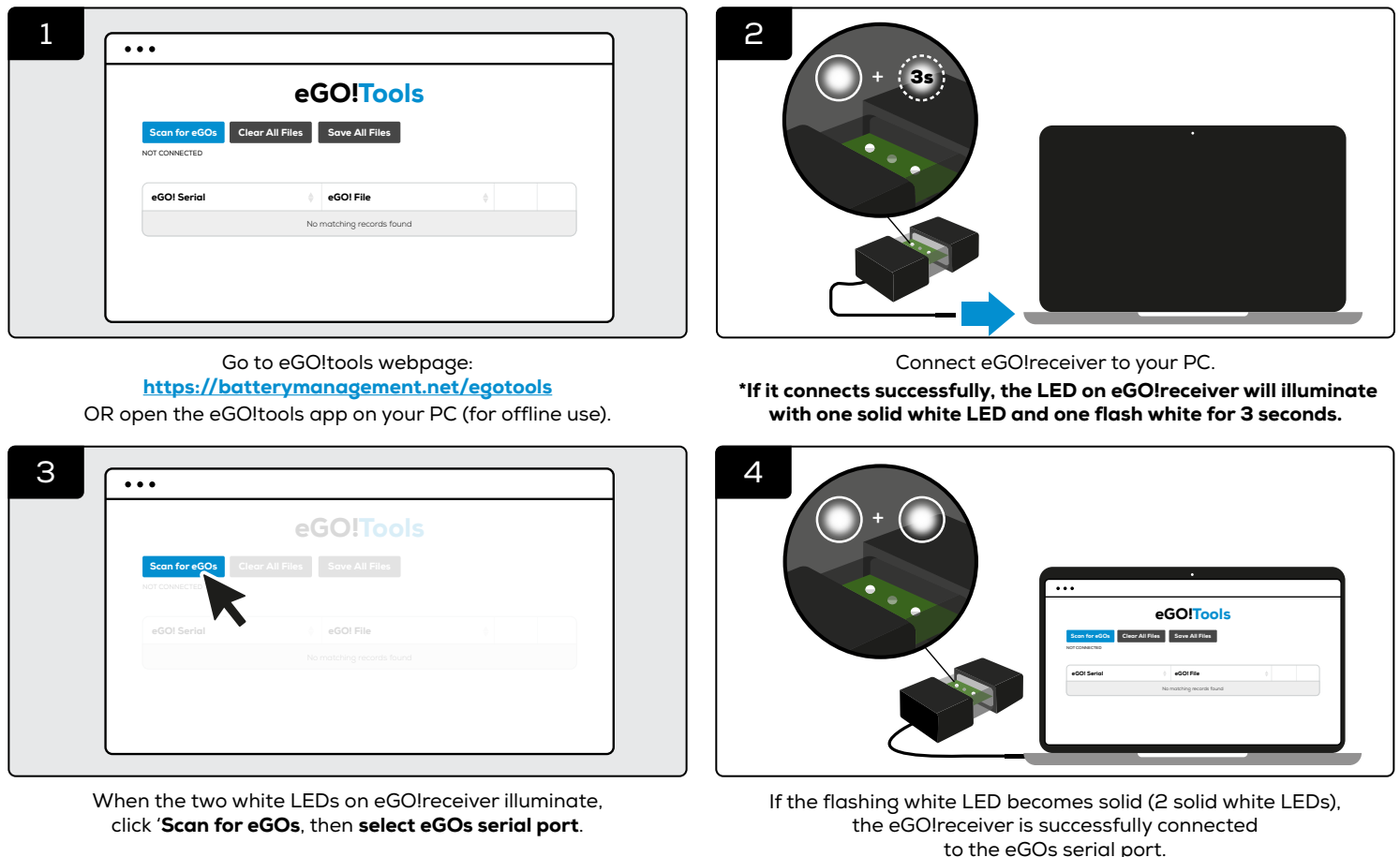


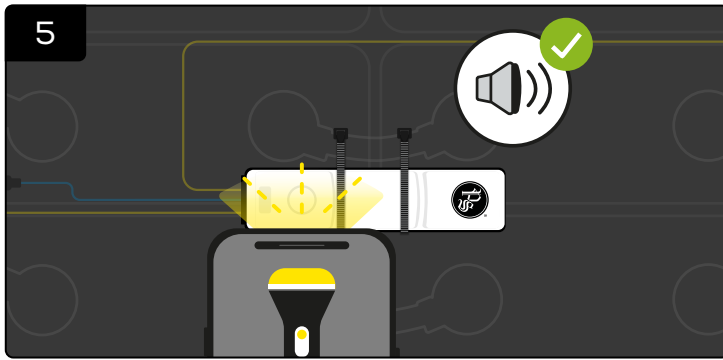
OVERVIEW OF DATA UPLOAD PROCESS

Figure 1: Data upload process via eGO!receiver™ to batterymanagement.net



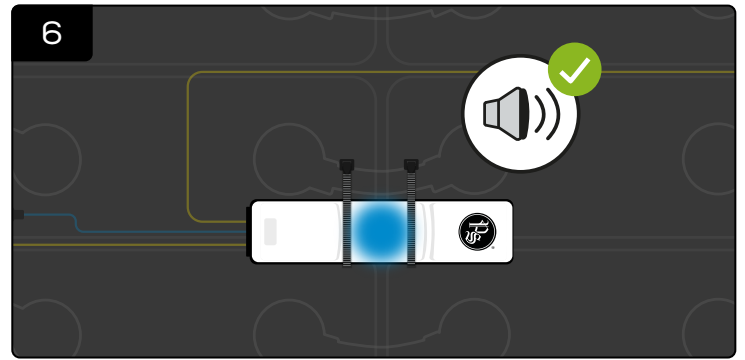
STEP 1: DOWNLOAD DATA FROM EGO!





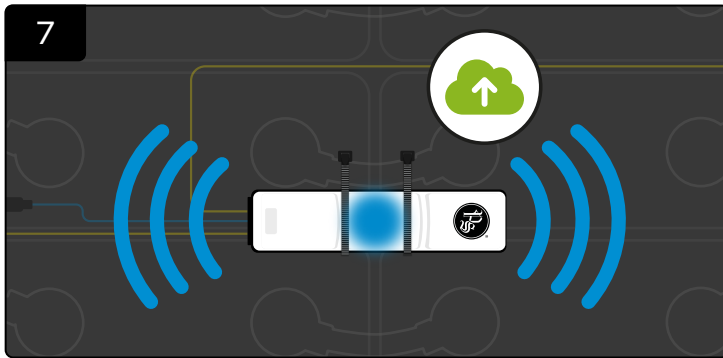
Take a bright flash light (*A mobile phone flash light will be adequate) and place directly on **top of the white circle on eGO! monitor** until you hear a beep along with blue LED.

(*Note: A flash light may not work under very bright sunlight. You must shade the unit for at least 5 seconds, then use the light source to activate the manual upload.)



At this point quickly remove the flash light and you should hear a second beep.

*If the second beep is not heard, then the sequence will need repeating, allowing for a 3-second reset period before the next attempt.

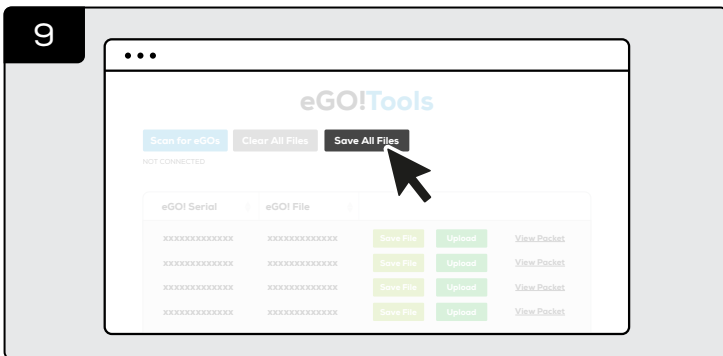


The radio is now enabled, and the blue LED remains illuminated until all data has been transmitted.

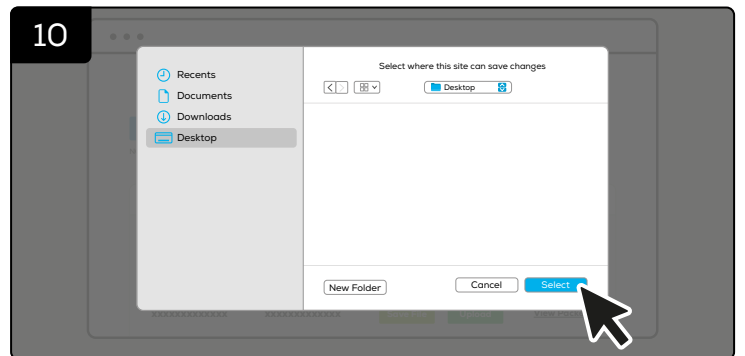


If data uploads successfully to eGO!tools, blue LED will also illuminate on eGO!receiver. eGO! data packets will appear in the list, along with the voltage logs.

STEP 2: SAVE DATA VIA EGO!TOOLS

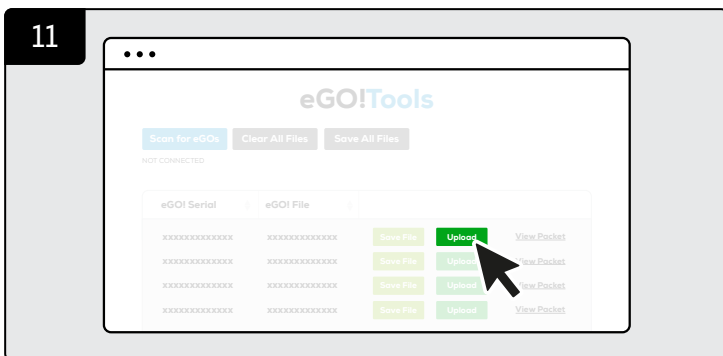


Click '**Save All Files**' on eGO!tools.

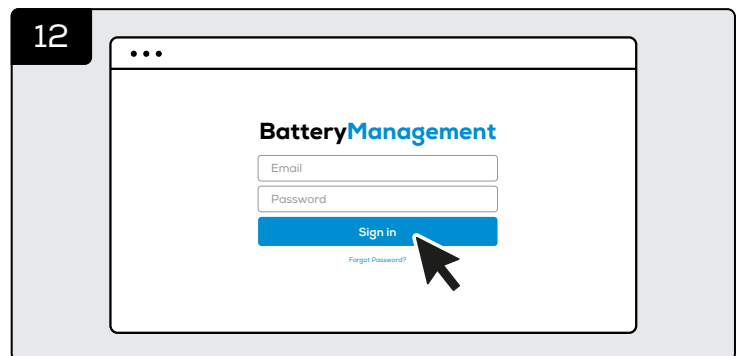


Save the files to your PC.

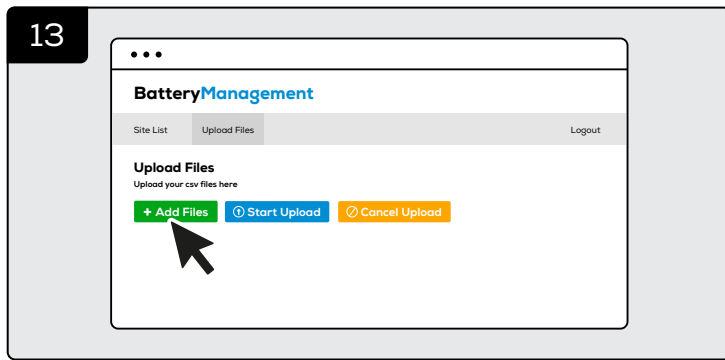
STEP 3: UPLOAD DATA TO BATTERYMANAGEMENT.NET



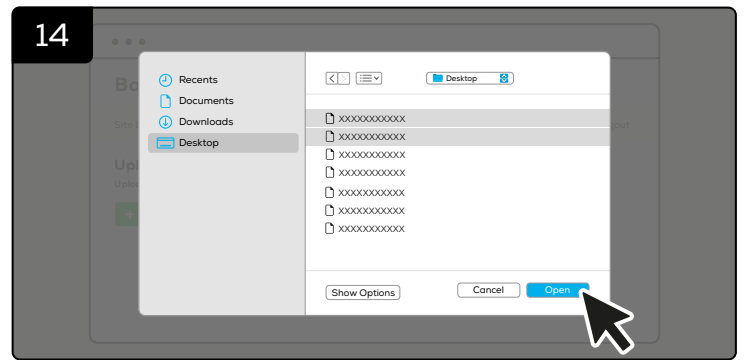
Click '**Upload**' on eGO!tools.



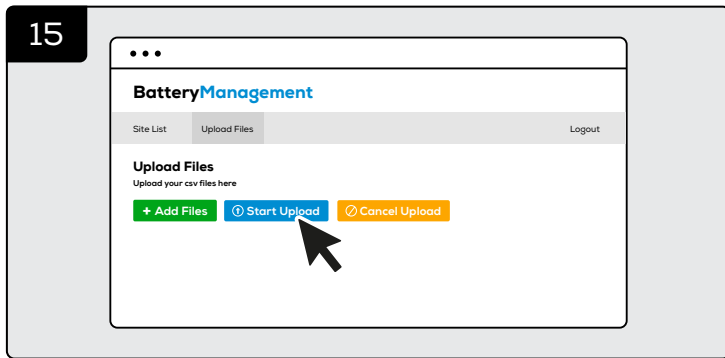
You will be directed to batterymanagement.net Login with your account details.



Click '+ Add Files'.



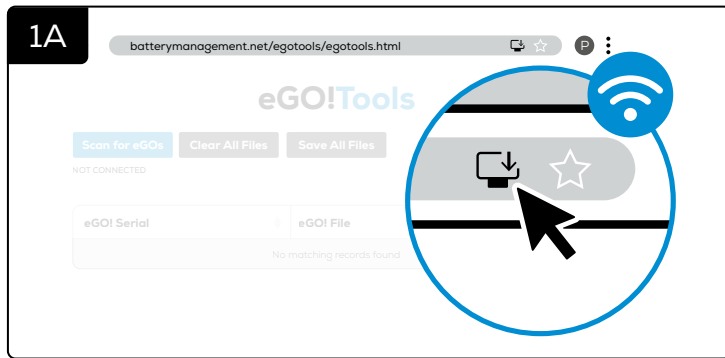
Select all downloaded files from your PC.



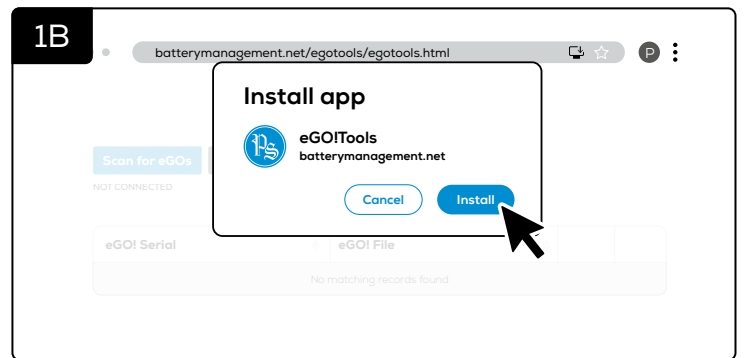
Click 'Start Upload' to send the data.
All data is now able to access online via batterymanagement.net.

FOR OFFLINE USE: DOWNLOAD EGO!TOOLS™ APP ON DESKTOP

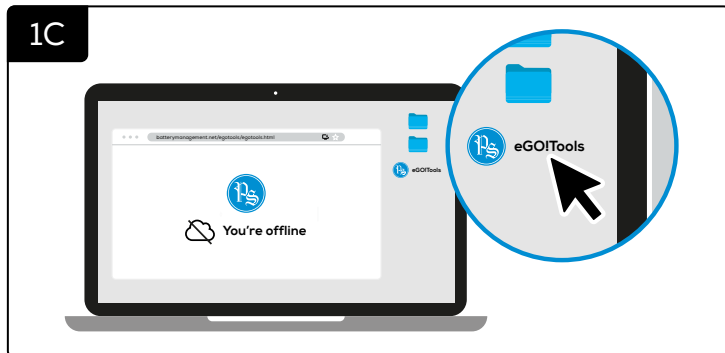
Example Browser: Google Chrome



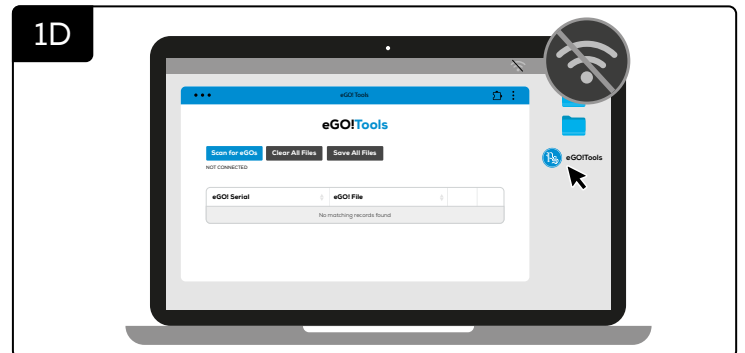
Go to eGO!tools webpage:
<https://batterymanagement.net/egotools>
Download the web app - eGO!tools to your desktop
when you have online connection.
(*If the download icon does not appear on the address bar,
please refers to [step 2A](#).)



You will be asked if you wish to install the eGO!tools app.
Download it to your desktop.

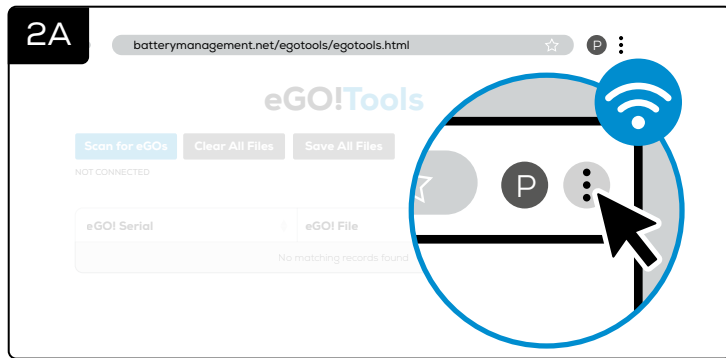


The app will appear as an icon on your desktop.



It can be used offline to download data from eGO monitors.

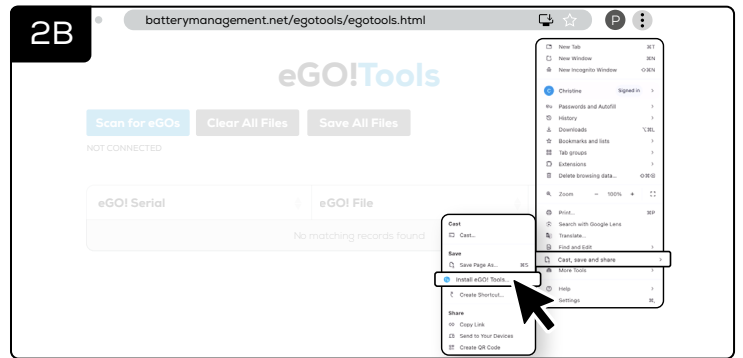
Alternative steps to download eGO!tools App on Desktop on Google Chrome:



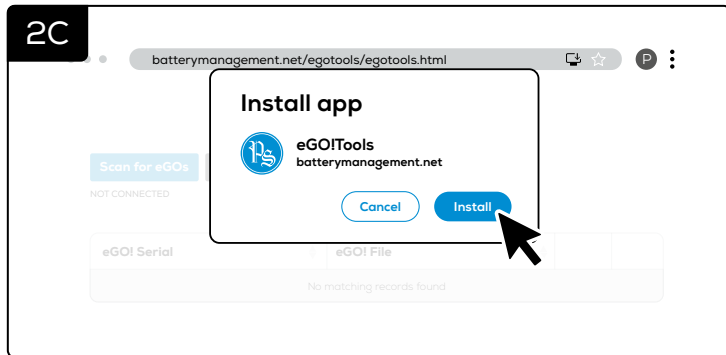
Go to eGO!tools webpage:

<https://batterymanagement.net/egotools>

Click the '3 dots' at the right edge of the top of the page, and this will give you more options.



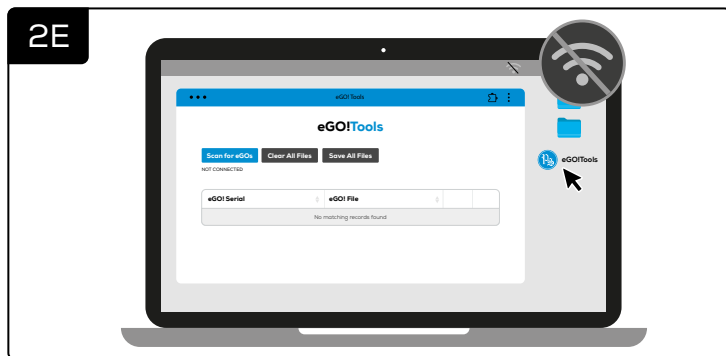
Scroll to 'Cast, save and share' and select 'Install eGO!tools'.



You will be asked if you wish to install the eGO!tools app. Download it to your desktop.



The app will appear as an icon on your desktop.



It can be used offline to download data from eGO monitors.



**FOR PRODUCT SPECIFICATIONS, USER GUIDES
AND FURTHER INFORMATION PLEASE VISIT:**

<https://www.phlsci.com/product-lines/battery-performance-monitors>

DOC0644 © 2025 Philadelphia Scientific UK Ltd. All Rights Reserved. Philadelphia Scientific and the PS logo are registered trademarks of Philadelphia Scientific LLC. eGO!, eGO!tools and eGO!receiver are trademarks of Philadelphia Scientific UK Limited. EGO.E. R2-170625



WWW.PHLSCI.COM

Philadelphia Scientific LLC
P: +1 (215) 616 0390
E: info@phlsci.com

Philadelphia Scientific EMEA
P: +44 (0) 1204 467777
E: info@phlsci.co.uk

Philadelphia Scientific ASIA PACIFIC
P: +61 (2) 8004 2447
E: info@phlsci.com.au

